

## Linak Battery Operation for Single Motor Couches

The Linak Jumbo Battery Operation allows the use of electric couches in an environment where wires are not ideal. This option is available for all single motor electric couches in the Clinical & Therapy Ranges.

### Models

**6075** Battery Operation for Single Motor Couch



Therapy 3 Section Couch with  
Linak Battery Operation

### Standard Features

- Wireless Electric Height Elevation
- 2 Batteries for minimum downtime
- High Battery Capacity: 24V DC, 1 x 2.9 Ah
- Provides the smooth height adjustment of an electric couch without the need for cables.
- One full charge provides 40 full high-low cycles facilitates easy cleaning
- Available for all single motor products in the Therapy & Clinical Ranges

### Included in Bundle

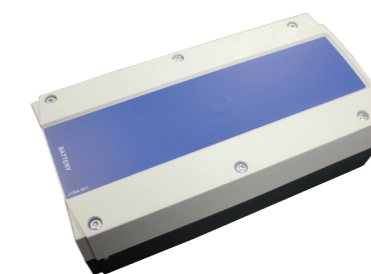
- 06A-7000-LK** Control Box with Emergency Cut-Out
- 06A-7001-LK** Jumbo BAJ1 Battery (Quantity: 2)
- 06A-7002-LK** Hand Switch with Charge Indicator
- 06A-7003-LK** Coiled Actuator Connector Cable
- 06A-7004-LK** Battery Terminal Cover (Quantity: 2)
- 06A-7005-LK** Couch Mounting Bracket
- 06A-7006-LK** Battery Charger
- 06A-7007-LK** Wall Mounting Bracket



Hand Switch with  
Battery Charge Indicator



Control Box with Emergency  
Cut-Out



2 Jumbo Batteries for  
minimum downtime



Wall Mountable Battery  
Charger



Wall Mounting Bracket &  
Couch Mounting Brackets